



Room Sensor installation guide

ecobee₃

Welcome!

Thank you for your purchase. Now that you have additional room sensors you'll get even more comfort and savings from your ecobee3 wi-fi thermostat.

Room sensors enable three features:

Smart Home/Away

If your ecobee3 senses that you are home during your scheduled Away period, or away during your scheduled Home period, it will automatically override your schedule to maximize comfort and savings.

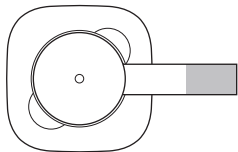
Follow Me

Control your comfort by averaging the temperature of the selected sensors that detect motion (Enabled) or all of the selected sensors in your home, regardless of motion (Disabled).

Now let's get your room sensors set up in 3 simple steps.

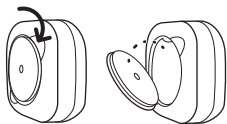
Step 1. Pair the room sensor while standing near your thermostat

1. To activate your room sensor, ensure your ecobee3 is awake by standing in front of it or touching the screen.
2. Pull the plastic tab on your room sensor and it will power on and connect to your ecobee3 automatically.



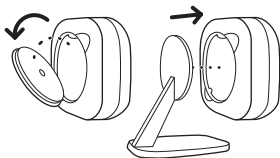
Stand in front of your ecobee3 and pull the plastic tab on the room sensor to automatically pair it with your thermostat.

3. Your ecobee3 will detect your room sensor and ask you to name it. You can verify a successful connection on your thermostat. If your sensor does not connect with the ecobee3, simply remove the battery, wait 2 minutes, and re-insert the battery to restart the detection process.

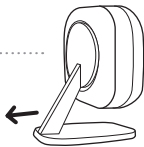


..... To access the battery, pop the room sensor back cover off using the ridges provided.

..... To attach the room sensor stand, remove the smaller back cover and pop the stand into place.

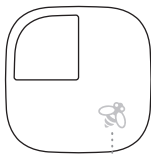
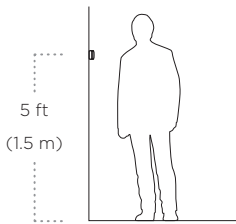


..... To remove the room sensor stand, pull the base outwards.



Step 2. Find a location

Place your room sensor at a height of approx. 5ft / 1.5m on an interior wall, away from direct heat/cool sources (eg. fireplace, air vents, etc.) If the sensor is out of range of your ecobee3 (approx. 45 ft / 13.7 m) the thermostat will show N/A, meaning it cannot connect to the room sensor. When in range, they will automatically reconnect.



Rotate room sensor so bee points up to the right.



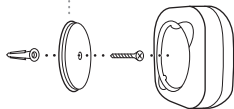
Warning! Do not place the room sensor in direct sunlight, near vents or window openings or in enclosed areas such as drawers, closed cabinets or closets as this will distort the temperature readings.

Step 3. Install the room sensor

Using the materials provided, install the room sensor in one of three ways:

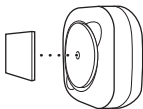
Option 1.

Attach to a wall using the screw provided.



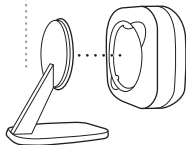
Option 2.

Attach to a wall using the adhesive provided.



Option 3.

Place on a flat surface using the stand provided.



Tip: For accurate occupancy and temperature sensing, make sure your room sensor has an unobstructed view of the room, and can sense the ambient room temperature (it cannot do so from an enclosed space).

Room sensor tips

Can I turn off the occupancy sensor?

You may want to sense temperature without tripping the motion sensor. Select a location for your room sensor where it can sense the ambient room temperature, without having a clear view of the room (turned away from the room, or tucked behind your family portrait).

Storing your room sensor

If you do not wish to use the room sensor, delete it from the ecobee3 sensors menu and disconnect the battery before storing it. This will prevent the sensor from trying to heat the inside of your storage closet!

Ideal locations

Have pets or curious children? To prevent your room sensor from being jostled or bumped off its stand, affix your sensor to the wall using the adhesive or screw provided, or simply place it out of reach.

Room Sensor Specifications

Model No:	EBRSE4-01
FCC ID:	WR9EBRSE4
IC:	7981A-EBRSE4
Dimensions:	44x44x20 mm without the stand. 53 mm tall when mounted on the stand
Wireless band:	915 MHz
Power source:	CR2032 watch battery
Operating conditions:	Operating Temperature: 0°C to 40°C
Operating Humidity:	20% to 80% RH

FCC Compliance Statement

Compliance Notice:

This equipment has been tested and found to comply with the limits for a Class B digital device, pursuant to part 15 of the FCC Rules. These limits are designed to provide reasonable protection against harmful interference in a residential installation. This equipment generates, uses and can radiate radio frequency energy and, if not installed and used in accordance with the instructions, may cause harmful interference to radio communications. However, there is no guarantee that interference will not occur in a particular installation. If this equipment does cause harmful interference to

radio or television reception, which can be determined by turning the equipment off and on, the user is encouraged to try to correct the interference by one or more of the following measures:

- Reorient or relocate the receiving antenna.
- Increase the separation between the equipment and receiver.
- Connect the equipment into an outlet on a circuit different from that to which the receiver is connected.
- Consult the dealer or an experienced radio/TV technician for help.

This device complies with part 15 of FCC rules. Operation is subject to the following two conditions:

1. This device may not cause harmful interference.
2. This device must accept any interference received, including interference that may cause undesired operation.

Change or modifications that are not expressly approved by the manufacturer could void the user's authority to operate the equipment.

RF Exposure Information:

This equipment complies with FCC radiation exposure limits set forth for an uncontrolled environment. In order to avoid the possibility of exceeding the FCC radio frequency exposure limits, human proximity to the antenna shall not be less than 20cm during normal operation.

Industry Canada (IC)

Compliance Notice:

This device complies with Industry Canada license-exempt RSS standard(s).

Operation is subject to the following two conditions:

1. This device may not cause interference, and
2. This device must accept any interference, including interference that may cause undesired operation of the device.

This Class B digital apparatus complies with Canadian ICES-003.

RF Exposure Statement:

This equipment complies with IC RSS-102 radiation exposure limits set forth for an uncontrolled environment. This transmitter must be installed to provide a separation distance of at least 20 cm from all persons and must not be collocated or operating in conjunction with any other antenna or transmitter.

Warning: Changes or modifications not expressly approved by ecobee Inc. could void the user's authority to operate the equipment.



We're here to help

ecobee.com | support@ecobee.com | 1.877.932.6233

EBRSE4-01